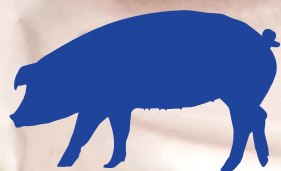
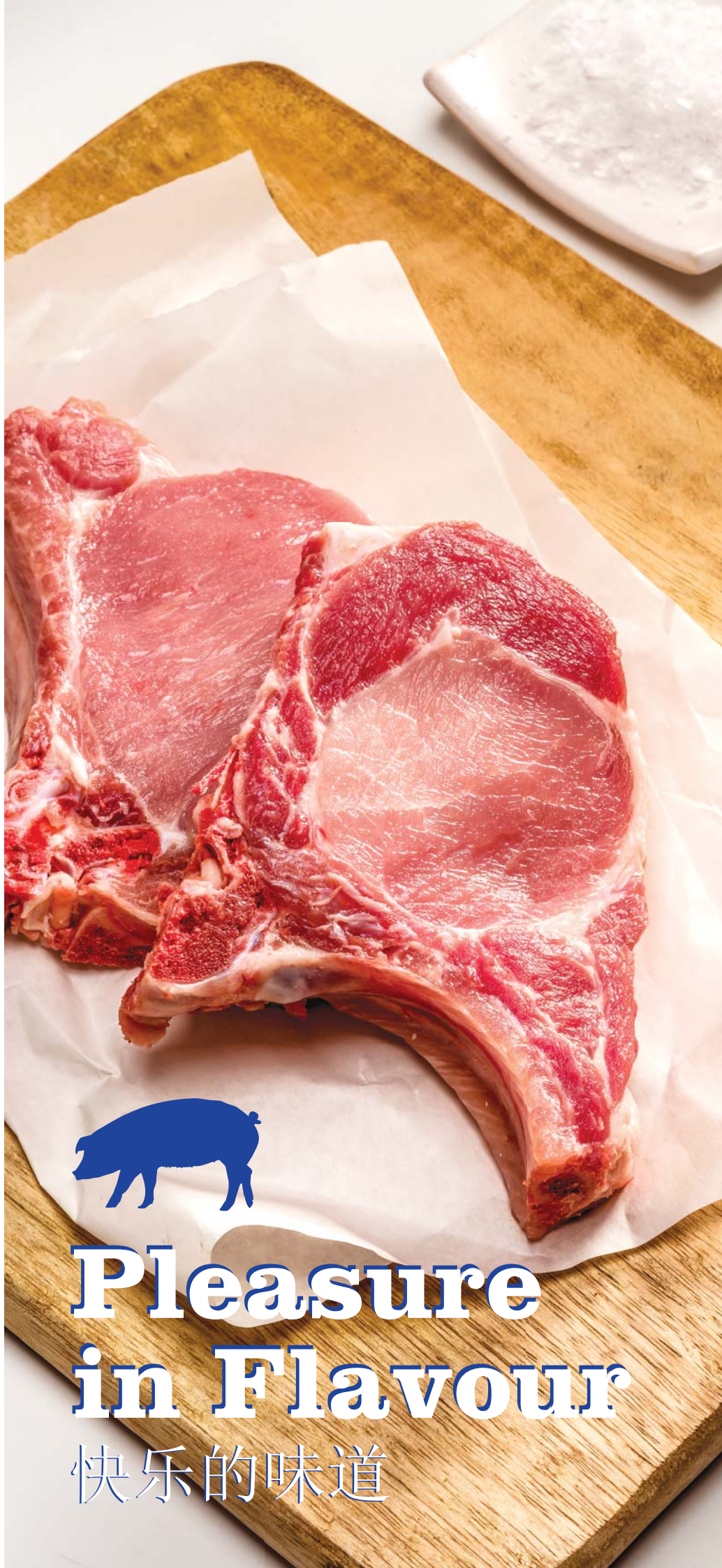




BATALLÉ



**Pleasure
in Flavour**

快乐的味道

ES-10.04311/GE



The Strength of Alliance

Batallé is a group of companies with a long tradition. Wholeheartedly devoted to the pork sector, we are united by the spirit to achieve a common goal: **To obtain the maximum quality in all of our products, while fully guaranteeing their traceability.**

联盟的力量

“八达耶”是一个拥有悠久传统的公司。全心全意致力于猪肉行业，我们本着团结的精神实现一个共同的目标：在充分保证产品的可追溯性的同时，获得所有产品的最高质量。



Selección Batallé

Since 1962, our goal at Seleccion Batallé has always been the same: to attain the most select and valued porcine breeding animals. With our own genetics projects, we guarantee that our livestock can produce the optimal balance between quality and lean meat quantity.

自1962年以来，我们在SeleccionBatallé的目标始终如一：为了获得最多的精选和珍贵的猪繁殖动物。通过我们自己的遗传项目，我们保证我们的家畜能够在质量和瘦肉量之间达到最佳平衡。



Cárnica Batallé

The company Cárnica Batallé, specialises in pork Carcass Quartering, with two lines of product: **Batallé “el Único”** and White Pork from Batallé.

CárnicaBatallé公司专门从事猪肉胴体营养，有两种产品系列：Batallé “el Único” 和Batallé的白猪肉

Esporc

esporc

The Company Esporc, was founded in 2002 as a feed manufacturer. As a result, Carnica Batallé has a totally reliable feed supplier for all of the animals that come from Selección Batallé. We give at our pork a personalized food.

Esporc公司成立于2002年，是一家饲料制造商。因此，CarnicaBatallé为所有来自SelecciónBatallé的动物提供了完全可靠的饲料供应商。我们在我们的猪肉给个性化的食物。



Norfrisa

Norfrisa, our Slaughterhouse, Slaughters the livestock and stores the carcasses in cold store for subsequent collection. Since 1973, this centre has been loyally slaughtering all of Cárnica Batallé's pig and is constantly modernising its facilities. In fact, Norfirsia is one of the state's largest slaughterhouses.

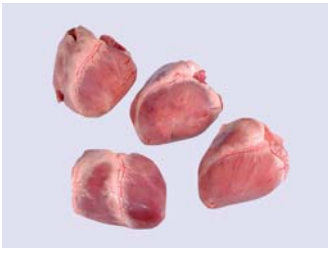
我们的屠宰场Norfrisa屠宰牲畜并将屠体存放在冷库中供以后收集。自1973年以来，该中心一直忠实地屠杀卡尔尼卡特勒的所有猪，并不断对其设施进行现代化改造。实际上，Norfirsia是该州最大的屠宰场之一。

Unexporc



Unexporc was founded in 1994 for the export of meat products. The idea was to respon to the needs of our customers, meeting and agreed standards for quality. Through the years, Unexporc has earned considerable international prestige in the sector.

Unexporc成立于1994年，主要出口肉类产品。这个想法是为了响应客户的需求，满足和达成一致的质量标准。多年来，Unexporc在该领域赢得了相当的国际声望。



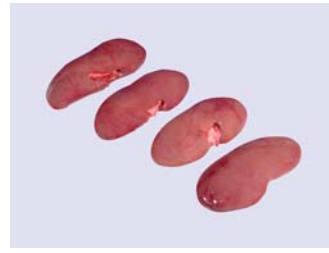
Label: 0X75 Code n°: 885

Heart
冻猪整心



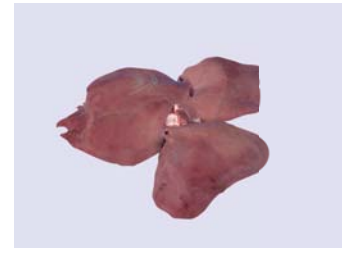
Label: 0X77 Code n°: 885

Heart, Slashed
冷冻猪心



Label: X076 Code n°: 889

Kidney
猪腰



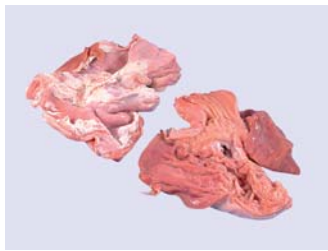
Label: 0X74 Code n°: 882

Liver
猪肝



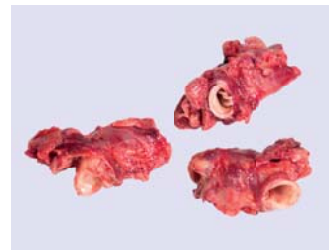
Label: 0X70 Code n°: 690

Oesophagus
冷冻猪食管



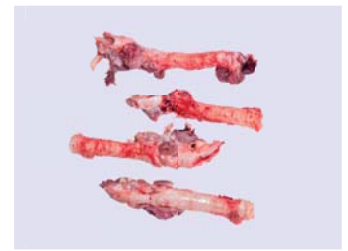
Label: - Code n°: 881

Stomach Butterfly Cut
蝴蝶切猪肚



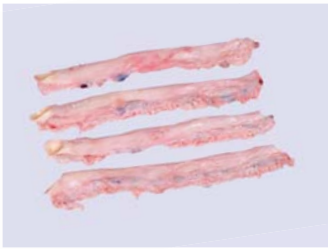
Label: X126 Code n°: 888

Throat Bone
猪喉结



Label: 0X79 Code n°: 870

Trachea
猪气管



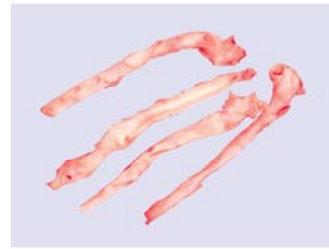
Label: 124N Code n°: 865

Aorta
猪动脉



Label: 0X71 Code n°: 865

Aorta Clean
猪动脉



Label: X718 Code n°: 865

Aorta B
猪动脉 B



Label: 0X72 Code n°: 868

Testicle
冷冻猪蛋



Label: 0X78 Code n°: 869

Pizzle
冷冻猪鞭





Label: X721 Code n°: X721

Leg Bone in with Feet
冷冻带骨猪后腿



Label: 0X90 Code n°: 721

Leg Round Cut without Feet
圆切去蹄猪后腿



Label: 0X42 Code n°: 706

Leg 4D
4D去骨猪后腿肉



Label: X116 Code n°: 737

Hind Hock
猪后肘



Label: 0X49 Code n°: 682

Knuckle
冷冻猪脚圈



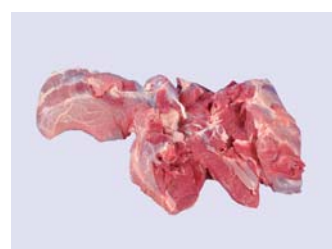
Label: 0X38 Code n°: 884

Hind Feet
短切猪脚



Label: - Code n°: 883

Hind Feet Long Cut
冷冻长切猪脚



Label: 0X32 Code n°: 745

Shoulder 4D
4D去骨前腿肉



Label: 00X24 Code n°: 621

Collar Boneless
无骨颈肉



Label: X115 Code n°: 765

Front Hock
冷冻猪前肘子



Label: X011 Code n°: 883

Front Feet
猪手



Label: X23 (G/S) Code n°: 755-756

Front Feet with Hock
冻猪手连肘



Label: - Code n°: 803

Belly Rindless Single Ribbed
猪去皮挑骨中方



Label: X124 Code n°: 805

Belly Sheet Ribbed
去皮剖骨中方



Label: 0X48 Code n°: 604

Spare Ribs
猪肋排



Label: 00X7 Code n°: 606

Riblet
冷冻猪肉小排



Label: - Code n°: 883

Diadema
冷冻猪对耳



Label: X112 Code n°: 857

Ear
猪耳



Label: X863 Code n°: 863

Head
冷冻猪头



Label: X140 Code n°: 864

Half Head Ear Off
鍔峰唸鏷D慘鎗冲慘鐔歌軌鎗娉娉



Label: - Code n°: 887

Tongue Swiss Cut
猪舌瑞士切



Label: X898 Code n°: 898

Tongue with Root Meat
冷冻猪舌



Label: 835L Code n°: 835

Lip
猪唇



Label: X108 Code n°: 834

Lip Bone in
冷冻猪带骨下唇



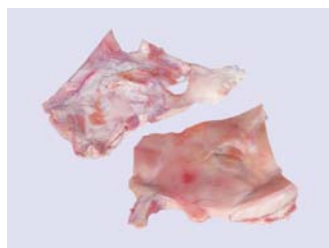
Label: X110 Code n°: 855

Snout Long Cut
冷冻猪长鼻



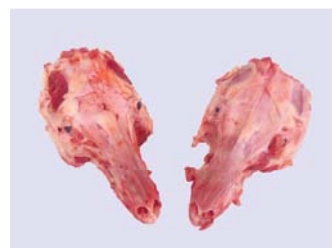
Label: X855 Code n°: 856

Snout Short Cut
冷冻猪短鼻



Label: 835M Code n°: 835

Mask
猪面具



Label: - Code n°: 845

Skull
冷冻猪头



Label: - Code n°: 633

Loin Bone-in Rindless
带骨带皮猪里脊肉



Label: 0X80 Code n°: 652

Loin Boneless Rindless
猪外脊



Label: 0X25 Code n°: 610

Loin Ribs
肋排心



Label: 0X93

Code n°: 772

Trimming 90/10

碎肉90/10



Label: 0X92

Code n°: 771

Trimming 80/20

碎肉80/20

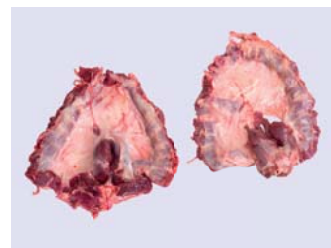


Label: 0X62

Code n°: 770

Trimming 70/30

碎肉70/30



Label: 0X19

Code n°: 892

Diaphragm

冷冻猪横膈膜



Label: 0X95

Code n°: 823

Back Fat

背膘



Label: 0X94

Code n°: 822

Cutting Fat

碎膘



Label: -

Code n°: 839

Soft Fat

猪软油

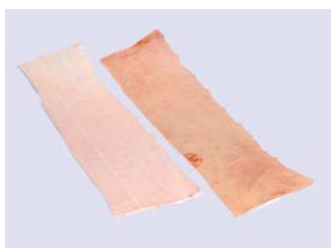


Label: 0X73

Code n°: 880

Flare Fat

板油



Label: 0X99

Code n°: 827

Back Rind

背皮



Label: X100

Code n°: 828

Pork Belly Rind

腹皮

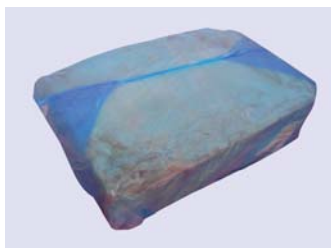
**Quality
with flavour**

质量和味道



Naked Block

裸装



Polyblock

塑料包装



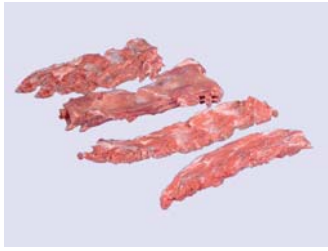
Carton

纸箱



Jumbo Pallet

大纸箱



Label: X114

Code n°: 605

Flat Bone

龙骨边

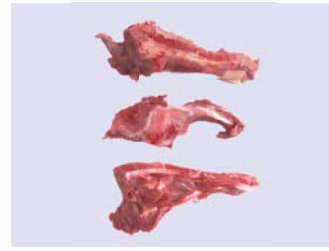


Label: 0X46

Code n°: 603

Sternum Bone

胸骨



Label: 0X53

Code n°: 688

Tail Bone

冷冻猪尾骨



Label: 0X57

Code n°: 688

Tail Bone with Tail

冷冻猪尾骨带尾巴



Label: 00X3

Code n°: 685

Neck Bone

冷冻猪颈骨

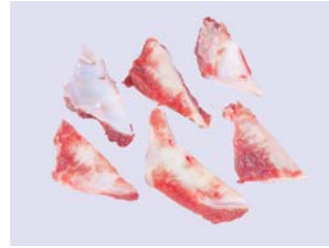


Label: 0X12

Code n°: 676

Back Bone

背骨



Label: 0X52

Code n°: 684

Moon Bone

月亮骨



Label: X117

Code n°: 695

Blade Bone

猪扇骨



Label: X128

Code n°: 695

Blade Meaty Bone

冷冻猪多肉板骨



Label: 0X41

Code n°: 687

Femur Bone

猪后筒骨



Label: 0X54

Code n°: 692

Humerous Bone

前筒骨

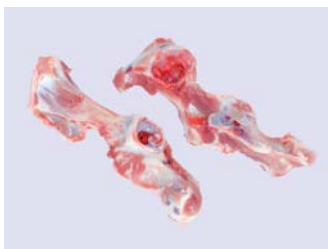


Label: 0X55

Code n°: 691

Humerous Bone Half Cut

半节前筒骨



Label: X118

Code n°: 693

Hip Bone

猪臀骨



Label: X122

Code n°: 687

Femur Joint Shank Bone

双节猪后筒骨



Label: X119

Code n°: 694

Piano Bone

冷冻猪肋骨条



Label: 0X51

Code n°: 683

Soft Bone

冷冻猪软骨

**Quality
with flavour**

质量和味道



BATALLÉ

Cárnica Batallé, S.A.

Av. dels Segadors, s/n
17421 Riudarenes, Girona (Spain)

Tel. +34 972 856 363
www.batalle.com

ES-10.04311/GE